

Protect Your Boat

Zebra mussels attach to a variety of materials, including fiberglass, aluminum, wood, and steel and may damage a boat's finish. Veligers are extremely small and can be drawn into engine passages. Once they settle out in the engine cooling system, they can grow into adults and may block intake screens, internal passages, hoses, seacocks, and strainers. The best ways for boat owners to avoid these types of damage are:

Use a boatlift to completely remove the watercraft from the water when not in use.

Run your boat regularly if it is moored in zebra mussel infested waters. Run the engine at least twice a week at slow speeds (about 4-½ mph) for 10 to 15 minutes. Monitor engine temperatures – if you notice an increase, it may mean that zebra mussels are clogging your cooling system. Immediately inspect the system and remove any zebra mussels. The end of boating season is also a good time to inspect and clean the cooling system.

Lift the motor out of the water between uses if mooring. Fully discharge any water that may still remain in the lower portion of the cooling system.

Tip down the motor and discharge the water when leaving a waterbody to reduce the likelihood of transporting veligers (in water) to another waterbody.



Clean your boat and equipment. Physically remove (scrape) adult mussels from your boat, trailer, and equipment by hand. Young zebra mussels and veligers may be too small to see. Wash your boat with high-pressure hot water (use water >104°F if possible). Use high-pressure cold water if hot water is not available. (Avoid pressure washing classic wooden boats or others not made of metal.)

Apply anti-fouling paints or coatings to the hull and the engine's cooling system to prevent zebra mussel attachment. It is best to purchase these from an area boat dealer or your local marina. Anti-fouling paints that are copper based can be used in Wisconsin, and typically need to be reapplied every one to two years. In-line strainers can also be installed in the engine's cooling system.

Use motor "muffs", also known as motor flushers, to remove zebra mussels and other materials from your boat engine or personal watercraft. Clamp the motor

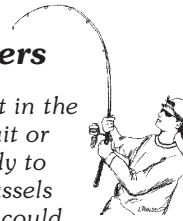


Amy Bellows, WI DNR

flusher onto the lower unit over the cooling inlets on either side of the motor, and screw the nozzle of your garden hose into it. Run the boat engine for approximately 10 minutes or as suggested by the manufacturer.

Special note of caution for anglers

Dispose of unwanted bait in the trash - do not transfer bait or water from one waterbody to another. Larval zebra mussels or other invasive species could be present in the water with the bait.



Help prevent aquatic hitchhikers from catching a ride on your boat or equipment:

- ✓ Inspect and remove aquatic plants and animals,
- ✓ Drain water,
- ✓ Dispose of unwanted bait in the trash,
- ✓ Rinse with hot and/or high-pressure water, OR
- ✓ Dry for 5 days.

Clean Boats . . . Clean Waters

For a list of known zebra mussel infested waters, visit:

www.dnr.wi.gov/org/water/wm/GLWSP/exotics/zebra.html

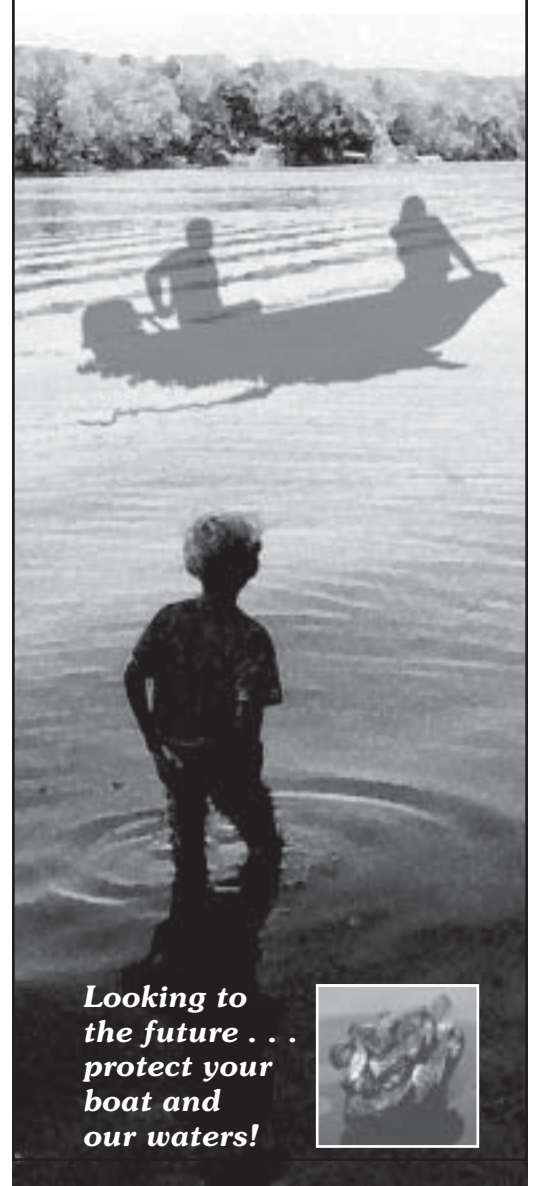
The Wisconsin Department of Natural Resources provides equal opportunity in its employment, programs, services, and functions under an Affirmative Action Plan. If you have any questions, please write to Equal Opportunity Office, Department of Interior, Washington, D.C. 20240.

This publication is available in alternative format (large print, Braille, audiotope, etc.) upon request. Please call 608/267-7694 for more information.



Cover photo: L. Pohlod. Inset: Great Lakes Sea Grant Network
Designed by L. Pohlod, Blue Sky Design, LLC PUB-WT-383 2004

Zebra Mussel Boater's Guide



Looking to the future . . . protect your boat and our waters!



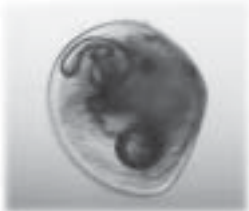
Zebra mussel identification and life cycle

Mature zebra mussels look like small D-shaped clams. Their yellowish-brown shells have alternating light and dark stripes.

Zebra mussels can reach a maximum of 2 inches in length, though most are smaller than an inch. They are typically found attached to solid objects, often growing in large clusters.



Ohio Sea Grant



Ontario Ministry of Natural Resources Amy Bellows, WI DNR

Zebra mussels begin as eggs, then develop into free-swimming larvae (called **veligers**), which are microscopic. The veliger photos shown above were taken with the aid of a microscope. Veligers are spread by currents; after about three weeks, they settle out and firmly attach themselves to hard surfaces, where they grow into adults. Their lifespan is typically three to five

years. They begin to reproduce after a year or two - females can release up to one million eggs per year!



James Lubner, University of Wisconsin Sea Grant

What do zebra mussels do?

Zebra mussels are **filter feeders** that can filter large volumes of water (up to 1 Liter/day). In some cases they can filter the whole volume of a lake in a few months. They remove plankton – tiny plants and animals – from the water. What they eat (and what they don't eat) ultimately ends up on the lake or river bottom. Plankton is an important food source for young fish, native mussels, and other aquatic organisms. Zebra mussels may concentrate this food at the bottom, leaving open water species with **less to eat!**

Because they are so good at filtering, zebra mussels often **make water clearer**. This may force **light-sensitive fish**, like salmon and walleye, into deeper water to seek shelter from the sun. Increased light penetration allows aquatic plants to grow in deeper water and spread to a larger area. This may help smaller fish to survive by giving them places to hide, but makes it harder for large, predatory fish to find food.

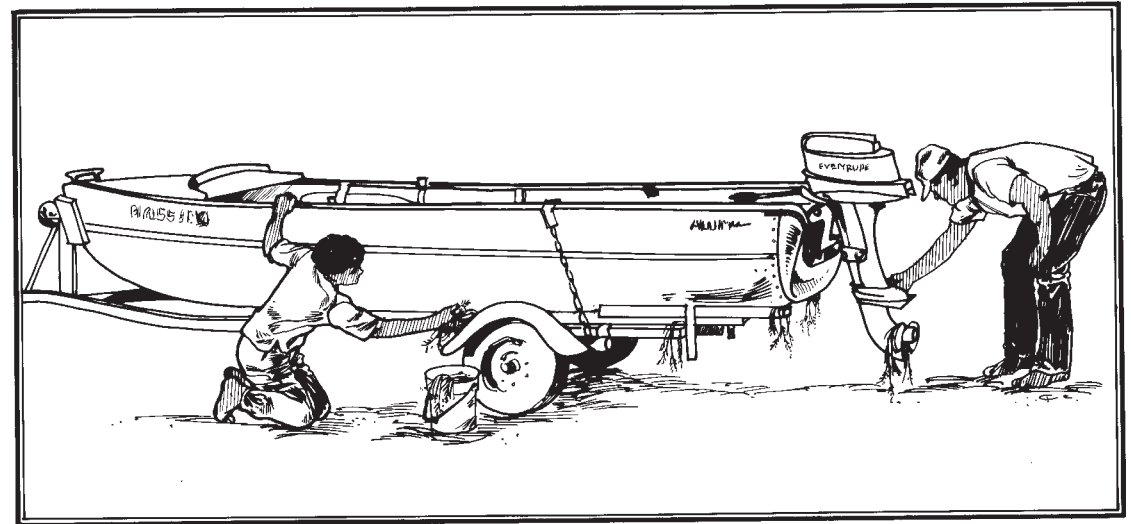
Thicker plant growth may also cause problems for boaters and anglers.



Don Schloesser, Great Lakes Science Center, National Biological Services

Zebra mussels cause people additional problems. They **clog water intakes and pipes** – large water users on the Great Lakes spent \$120 million from 1989 to 1994 to combat zebra mussels. They also **attach to piers, boatlifts, boats, and motors**, which can cause damage requiring costly repair and maintenance. Even when they die, their **sharp shells** wash up on beaches, creating foul odors and cutting the feet of swimmers.

How can I help prevent the spread of zebra mussels?



Microscopic veligers may be carried in livewells, bait buckets, bilge water – any water that's transported to another waterbody. They can also travel in currents to downstream waters. Adults can attach to boats or boating equipment that are moored in the water. They frequently attach to aquatic plants, which themselves may hitch a ride on boats and equipment. For these reasons, it is important to take the following steps to prevent the spread of zebra mussels and other aquatic invasive species while boating:

Before moving your boat from one water body to another:

- ✓ **Inspect** and **remove** aquatic plants, animals, and mud from your boat, trailer, and equipment,
- ✓ **Drain** all water from your equipment (boat, motor, bilges, transom wells, live wells, etc.),
- ✓ **Dispose** of unwanted bait in the trash, not in the water,

- ✓ **Rinse** your boat and equipment with hot (> 104°F) and/or high pressure water, particularly if moored for more than one day, OR
- ✓ **Dry** your boat and equipment thoroughly (in the sun) for five days.

Pressure washing note:

- ✘ Avoid pressure washing classic and wooden boats, along with canoes and kayaks that are not made of metal. These types of boats should be drained, cleared of all plant and animal materials, and left in the sun to dry completely.

Effective May 2002, Section 30.715, WI Act 16 prohibits launching a boat or placing a boat or trailer in navigable waters if it has aquatic plants or zebra mussels attached.