

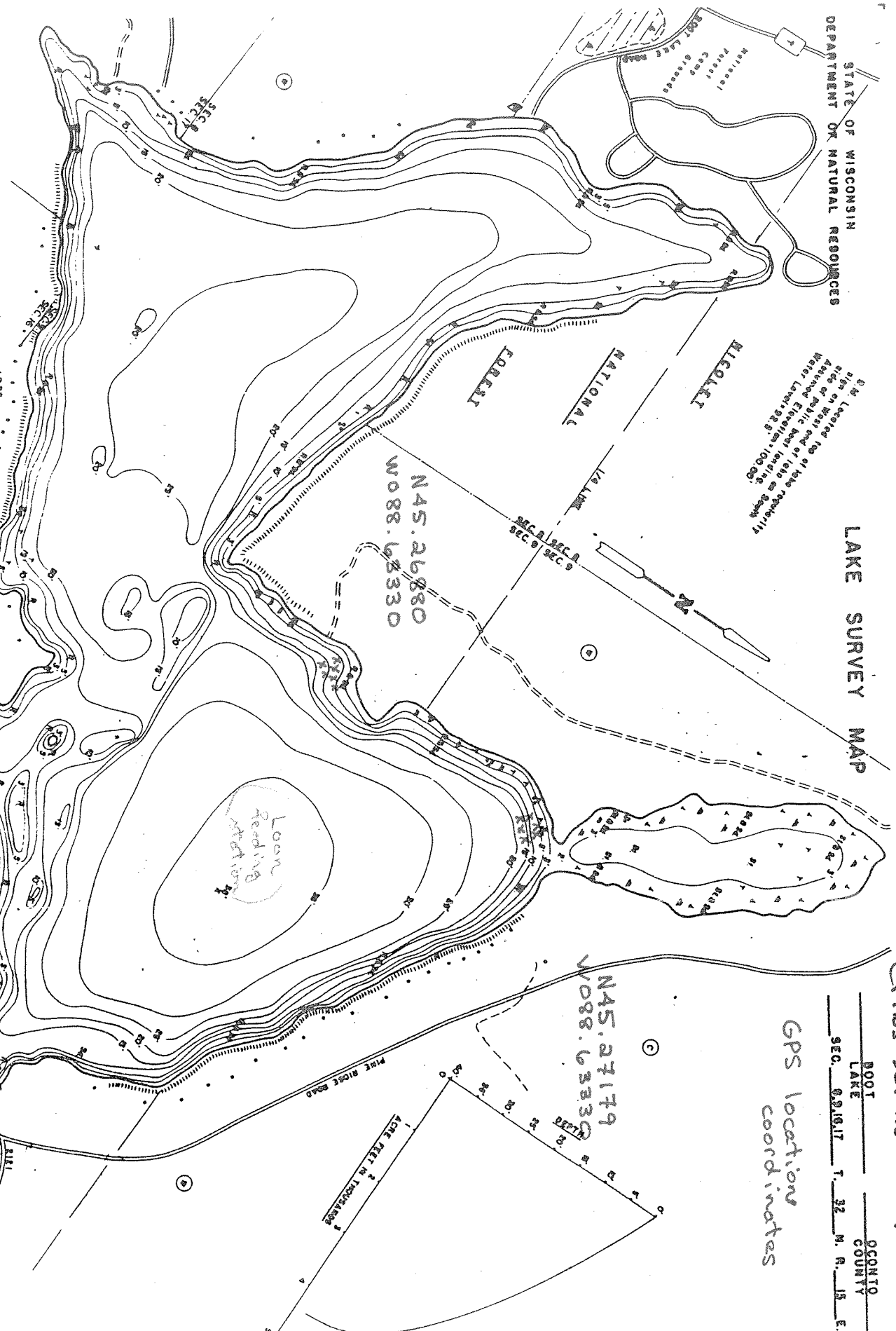
LAKE SURVEY MAP

BOOT LAKE
Fish crib locations
Crib set in 2007 - X

Site Located 100' of lake shoreline
Site on West end of lake as shown
As shown on Aerial Photo (see also on map)
Water Level: 922.8' (100.00')

GPS location
coordinates

BOOT LAKE
COUNTY
SEC. 9, T. 32 N., R. 15 E.



- EQUIPMENT RECORDING SYMBOLS MAPPED
- TOPOGRAPHIC SYMBOLS
- (1) Grass
 - (2) Partially wooded
 - (3) Cleared
 - (4) Pastured
 - (5) Agricultural
 - (6) Bare Area
 - (7) Ditch
 - (8) Reservoir
 - (9) Camp
- Other symbols:
 - ▲ High, steep slope
 - Wetlands shoreline
 - Marsh
 - Spring
 - Intermittent stream
 - Permanent inlet
 - or Gravel
 - Ditch
 - D.M.R. State owned land
 - Camp
- LAKE BOTTOM SYMBOLS
- Sand
 - Clay
 - M. Muri
 - Sd Sand
 - Sl Silt
 - Gravel
 - Rubble
 - B. Boulders
 - Stumps & Snags
 - Rock deeper to vegetation
 - Submerged vegetation
 - Emergent vegetation
 - Floating vegetation
 - Bush thicket

Legend 7 Miles

Scale: 300' 600' 900' 1800'

Access symbols:

- ◇ Access
- ◇ Access with Parking
- ◇ Boat Livery

Drawn by: J. Thoma
Field work by: J. Davis, A. Thoma